



Vision
ArchiVE

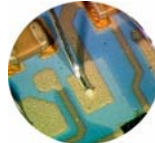
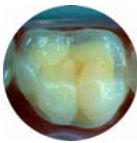
Modular multimedia solution
for image archiving,
acquisition, processing,
analysis and documentation

Digital image archiving and ergonomic microscopy

Vision Engineering Ltd has been developing and manufacturing world leading optical systems for over 45 years offering the user significant and unique advantages through the utilisation of patented technologies. Vision ArchiVE is an OEM version of a well established DHS image archiving and analysis product from DHS Dietermann & Heuser Solutions GmbH.

Vision ArchiVE provides significant advantages to the user through its ease of use and state of the art software modules. The software enables the seamless and traceable process of examination and reference to an existing library of diagnostic investigations.

Single user platforms and network capability is possible using standard Windows operating systems.



Technical documentation needs more than just the manipulation of text and often requires many images. ArchiVE is able to display an actual feature in its exactly defined magnification and context.

- Important details of the image can be emphasised.
- The sequence of the images is dictated by the requirements of the analytical work being carried out.
- Vision ArchiVE offers the ability to manipulate images which are being produced by a combination of a microscope and digital or video camera.
- ArchiVE produces impressive technical documentation and is able to significantly reduce the time required to produce comprehensive quality or analysis reports.



The extremely flexible and modular construction of Vision ArchiVE allows for a wide spectrum of possible application areas.

Examples include: **Electronics, SMD Technology, Quality Control, Communications Technology, Plastics, Precision Engineering, Medical Device Technology, Biomedicine, Forensics, Textiles,** and many more in industrial manufacturing, biomedical and analytical disciplines.

Archiving Basic Module

The basic module provides easy access to a database that presents a professional and wide ranging potential for comprehensive reporting. The fully editable database can accommodate pictures, text, other information and multi media objects. All data can be imported and exported intuitively, following user-friendly instructions. Simple, dynamic Microsoft Office connections are also available in this module.

The Microsoft connection allows significant further working of data formats and picture comparisons including: labels, calibration and scaling. Further functions allow slide show, drag & drop and direct print functions etc.



Image Capture

A wide variety of image sources can be used to import pictures in to the Vision ArchiVE data bank. From simple analogue video cameras (black & white, colour, RGB) through scanners and digital cameras, right up to high resolution digital microscope cameras. There are 4 separate dedicated image acquisition modules:

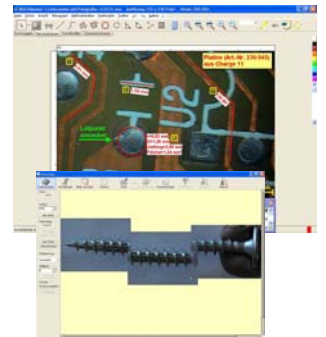
- Frame grabber (for analogue colour or black & white cameras)
- For Matrox RGB (specifically for 3-Chip RGB cameras)
- For Twain interfaces (e.g. digital cameras, scanners)
- For consumer cameras and CD-ROMS/DVD import (photo transfer)



Working with Images

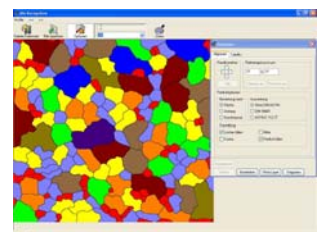
Extension modules are available for image analysis:

- 2D measurement of images with options such as distance, surfaces, circle and angle measurements. Titles and measuring values can also be overlaid.
- The panoramic picture capability allows for a reassembly of multiple pictures to enhance the field of view.
- Pictures taken in varying focus levels can be reassembled to provide an image which is in focus across the full depth range.
- Photo retouching and multi-media capabilities are also available.



Analysis

Various modules are capable of providing extensive quantitative image analysis. Vision ArchiVE provides modules for grain counting, particle counting, crimp analysis and general surface feature quantification, measurement and categorisation.



Documentation

In order to be able to communicate between software packages and internal statistical and report systems, Vision ArchiVE uses MS Word. In addition to the basic MS Word suite, ArchiVE also includes data compression, further reporting capabilities and picture window enhancement. Email and MS Word communication are some of the many features of the ArchiVE package.



Vision ArchiVE software solution is fully supported by Vision Engineering branches and their local distributors worldwide.

To receive a FREE demonstration CD, please visit our website: www.visioneng.com

We can also arrange for an in-house demonstration on your premises should you require it.

Vision Engineering Ltd.
(Manufacturing)
Send Road, Send, Woking, Surrey,
GU23 7ER, England
Tel: +44 (0) 1483 248300
Fax: +44 (0) 1483 223297
Email: generalinfo@visioneng.com

Vision Engineering Ltd.
(Commercial)
Monument House, Monument Way West,
Woking, Surrey, GU21 5EN, England
Tel: +44 (0) 1483 248300
Fax: +44 (0) 1483 248301
Email: generalinfo@visioneng.com

Vision Engineering Inc.
(Manufacturing & Commercial)
570 Danbury Road, New Milford,
CT 06776 USA
Tel: +1 (860) 355 3776
Fax: +1 (860) 355 0712
Email: info@visioneng.com

Vision Engineering Inc.
(Commercial West Coast USA)
745 West Taft Avenue, Orange,
CA 92865 USA
Tel: +1 (714) 974 6966
Fax: +1 (714) 974 7266
Email: info@visioneng.com

Vision Engineering Ltd.
(Central Europe)
Anton Pendele Strasse 3,
D-82275, Emmering, Germany
Tel: +49 (0) 8141 40167-0
Fax: +49 (0) 8141 40167-55
Email: info@visioneng.de

Nippon Vision Engineering
(Japan)
272-2 Saedo-cho, Tsuduki-ku,
Yokohama-shi, 224-0054, Japan
Tel: +81 (0) 45 935 1117
Fax: +81 (0) 45 935 1177
Email: info@visioneng.jp

Vision Engineering Ltd.
(France)
1 Rue de Terre Neuve,
ZA Courtaboeuf,
91967 Les Ulis Cedex, France
Tel: +33 (0) 164 46 90 82
Fax: +33 (0) 164 46 31 54
Email: info@visioneng.fr

Vision Engineering Ltd Italia
(Italy)
Via Pelizza da Volpedo 51,
20092 Cinisello Balsamo MI, Italy
Tel: +39 02 6129 3518
Fax: +39 02 6129 3526
Email: info@visioneng.it

Distributed by:

www.visioneng.com